

# Data Profiler Management Information System (DP MIS):

**URL:- *sechimachal.nic.in***

## **OBJECTIVE**

The Data Profiler Information Management System (DP MIS) has been developed by the State Election Commission with the technical support of NIC H.P with the objective to provide the different agencies at the State and district levels information about the various processes related to the elections to different office bearers of the Panchayati Raj Institutions and Urban Local Bodies. It would be possible to get hold of the information like nomination, scrutiny, withdrawal, contesting candidates, polling percentage and details of winning candidates etc. on a real time basis. The various reports generated through DP MIS would also be accessible to the general public and mass media with a link on the official portal of the State Election Commission to keep them abreast of the election process. This application will provide an effective tool to the Commission as well as the district authorities to monitor the election process in order to hold free and fair elections.

# How the DP MIS works :

For entry of data and viewing of various reports that will be generated on DP MIS, the following log-ins at various levels would be created :

- 1 State Level**
- 2 District level**
- 3 Block level & ULB LEVEL**
- 4 Panchayat level**

# **ROLE ASSIGNED TO EACH LEVEL**

## **1. State Level**

State user will consist of the State Election Commission. The user id and passwords for the District Users (Panchayats & Municipalities) will be created by the State user. Besides, the election programme will also be entered in the DP MIS at the State Level. The State user will be able to view reports generated by the system.

## **2. District Level**

**There will be two users at the District Level:**

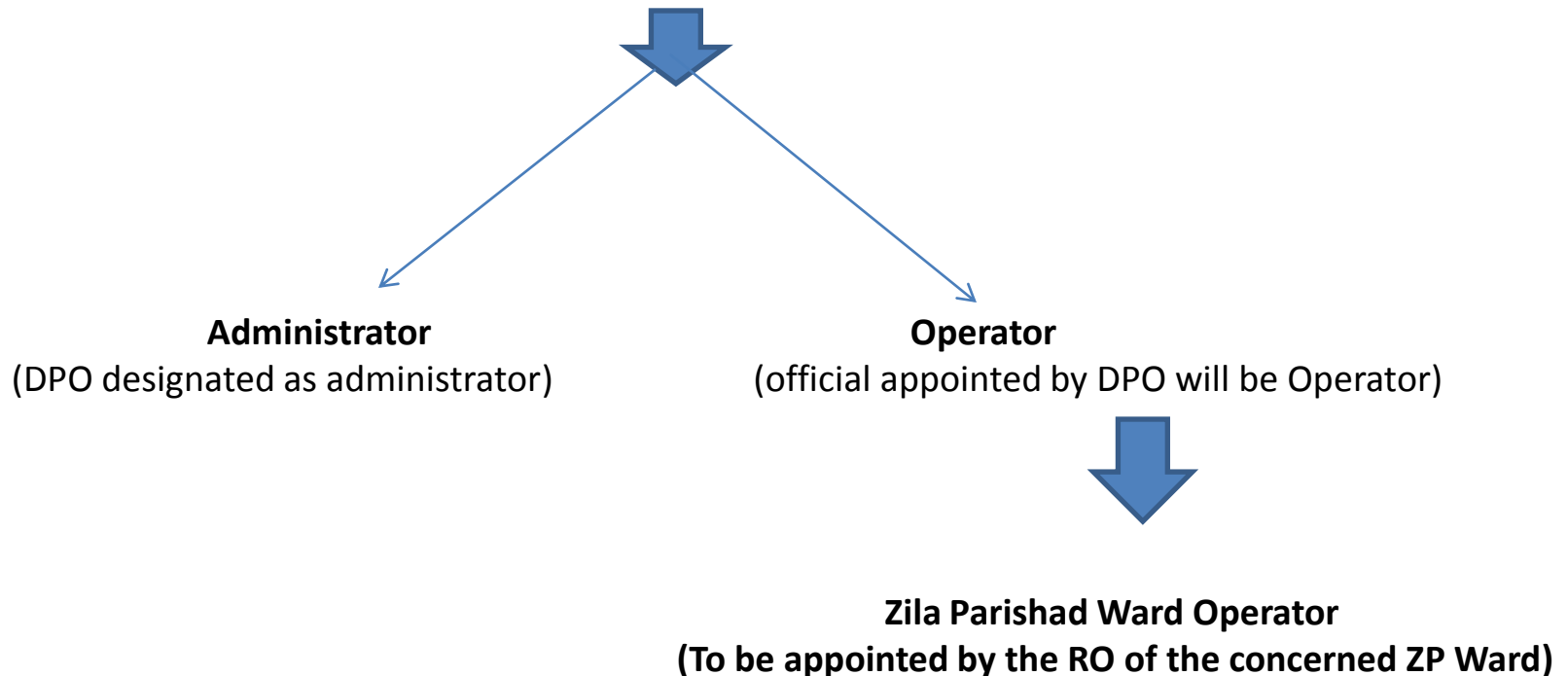
- i. District user (Panchayat)
- ii. District user (Municipalities)

# i. District User (Panchayats):

Once the user id and password has been created for the district user by the State User, they can log-in to the DPMIS.

The District User (Panchayat) will consist of the following :

## **District User (Panchayat)**



# **Works assigned to District Administrator (Panchayat) :**

- He will create the user-id and password of the district operator (Panchayat) and will also be responsible to verify the task done/data entered by the district operator (Panchayat).
- District administrator can view different reports and also can check the election program issued by the Commission.

# **Work assigned to the District Operator (Panchayat):**

- He will create user id and password for Zila Parishad Ward Operator and Panchayat Smiti Administrator.
- He can also reset the password, debar user and check the user within the district. He can also view various reports from his log-in and also can create new Blocks as notified by the govt. from time to time.

# **Work assigned to the Zila Parishad Ward Operator:**

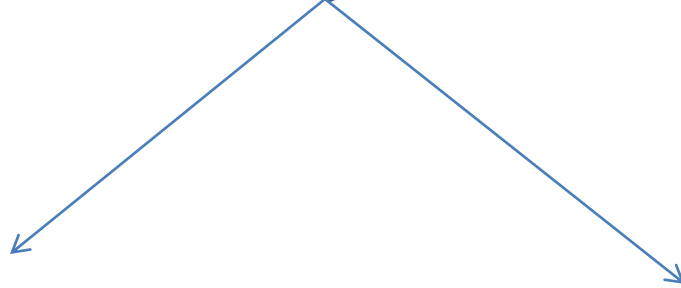
- He will be responsible to enter the details w.r.t nomination, scrutiny, withdrawal, final contesting candidates and details of winning candidates or unopposed office bearers of a particular Zila Parishad Ward.



# District User (Municipality)

- The District User (Municipality) will consist of the following

## District User (Municipality)



### **Administrator**

(officer in-charge Municipalities in Distt designated as administrator)

### **Operator**

(LFA designated as operator)

## **Work assigned to the District Administrator (Municipality):**

- He will create the user-id and password of the district operator (Municipality) and will also be responsible to verify the task done/data entered by the district operator (Municipality). District administrator (Municipality) can view different reports and also can check the election program issued by the Commission.

# **Work assigned to the district Operator (Municipality):**

- He will create user id and password for the Administrator (Municipality)
- He can also reset the password, debar user and check the user within the municipalities. He can also view various reports from his log-in and also can create new ULBs as notified by the govt. from time to time.

## 2. Block Level

- The Block User (Panchayat Samiti) will consist of the following:-

### **Block User (Panchayat Smiti)**



Administrator

Operator

(BDO/RO designated as administrator) (official appointed by BDO/ RO will be operator)

# **Works assigned to Panchayat Smiti Administrator :**

- He will create the user-id and password of the Panchayat Smiti Operator and will also be responsible to verify the task done/data entered by the Panchayat Smiti Operator.
- Panchayat Smiti administrator can view different reports and also can check the election program issued by the Commission.

# **Work assigned to the Panchayat Smiti Operator:**

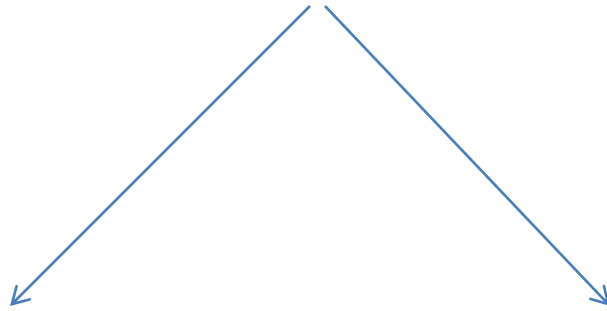
- He will be responsible to enter details w.r.t. nomination, withdrawal, final contesting candidates and list of winning candidates or unopposed office bearers of the Panchayat Smiti concerned.
- He can create Panchayat Smiti wards and will map Panchayats to the concerned Panchayat Smiti.

### **3. PANCHAYAT LEVEL**

- **There will be two users at the Panchayat Level:**
  - i. Panchayat Administrator
  - ii. Panchayat Operator

# The Panchayat level will consist of the following

## Panchayat User



**Administrator**

**Operator**

(PI or SI of the concerned Panchayat)

(Panchayat Secretary of the concerned Panchayat)



# **Works assigned to Panchayat Administrator**

He will create the user-id and password of the Panchayat Operator and will also be responsible to verify the task done/data entered by the Panchayat Operator. Panchayat Administrator will create/update ward extent, polling stations of the concerned Panchayat. Panchayat Administrator can view different reports, reservation status and also can check the election program issued by the Commission.

# **Work assigned to the Panchayat Operator**

He will be responsible to enter details w.r.t. nomination, withdrawal, final contesting candidates and list of winning candidates or unopposed office bearers of a particular Panchayat which includes Pradhan, Up-Pradhan and Ward Member also. He will also update the reservation status (current/previous) of the concerned Panchayat.